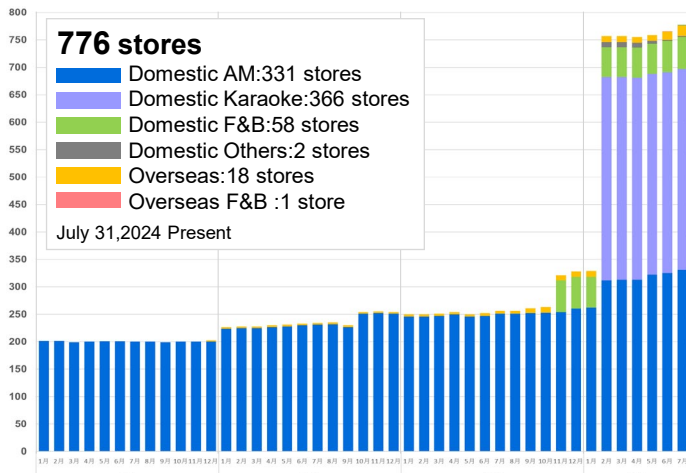


GENDA Group Store Expansion Progress Report

※Period covered: July 1, 2024 – July 31, 2024

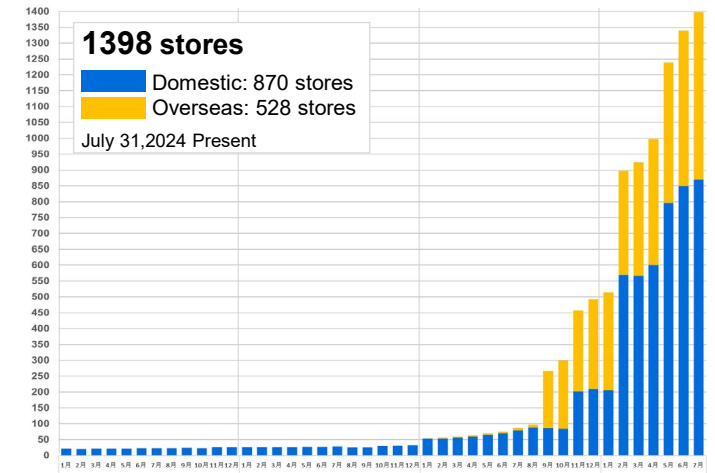
1. Number of stores and offices

Number of stores



Number of stores

※Number of mini-locations *Non-staffed game areas



※ Domestic F&B is the total number of "Lemonade by Lemonica" and "Hill Valley" ※ Domestic Others are stores other than AM, F&B, and Karaoke in Japan.

2. Four GiGO stores opened in shopping centers

On July 3, "GiGO AEON AWAJI" opened, followed by "GiGO KAWARAMACHI OPA B1F" with a collaboration cafe stand on July 11, and "GiGO SOYORA NARITA NEW TOWN" on July 12 as the flagship store of AEON's new "SOYORA" business model. On July 13, "GiGO AEON MALL URAWA MISONO," the largest mall in Saitama Prefecture, opened. Both stores are off to a good start, and are showing even more activity, especially among families, during the summer holidays.



GiGO AEON AWAJI

GiGO KAWARAMACHI OPA B1F

3. New GiGO business model, two new stores opened

On July 19, GiGO's first crane game specialty store "GiGO CRANE GAME OASIS IRUMA," opened. A variety of crane games are available for the whole family to enjoy. There is also a rest area, so you can play all day long. On July 31, "GiGO Arcade Café KITTE OSAKA" will have its grand opening at the much talked-about new facility "KITTE OSAKA" adjacent to Osaka Station. It is a new play space that combines a café/restaurant and amusement.

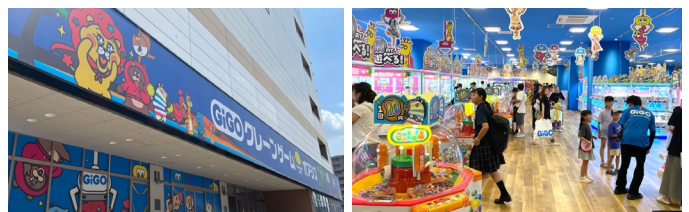


GiGO SOYORA NARITA NEW TOWN

GiGO AEON MALL URAWA MISONO

4. LEMONADE by Lemonica opens

"LEMONADE by Lemonica AEON MALL Kisogawa" opened on July 19. The event held to commemorate the opening was well received, and many customers experienced the taste of natural lemonade, which "makes you want to drink it every day."



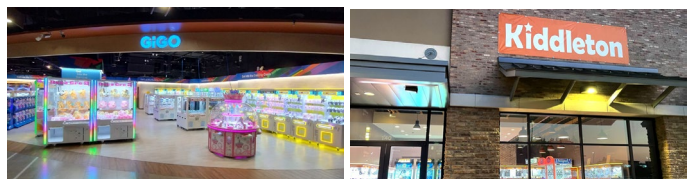
GiGO CRANE GAME OASIS IRUMA

5. GENDA Group overseas branches, expanding

"GiGO GLOBAL MALL NANGANG STATION", the seventh store in Taiwan, opened on July 27. The mall is directly connected to the station with many Japanese tenants, making it an easy place to stop by while commuting to work or school, shopping, or dining. In North America, Kiddleton opened three stores. The stores are crowded every day with customers seeking popular Japanese characters and Kiddleton-exclusive prizes. The GENDA Group's amusement arcades will continue to expand in Asia and North America.



GiGO Arcade Café KITTE OSAKA



GiGO Global Mall Nangang Station

Kiddleton