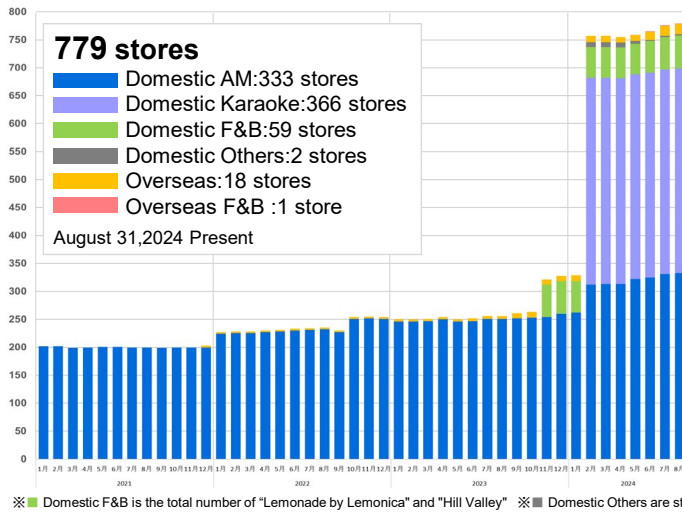


GENDA Group Store Expansion Progress Report

※Period covered: August 1, 2024 – August 31, 2024

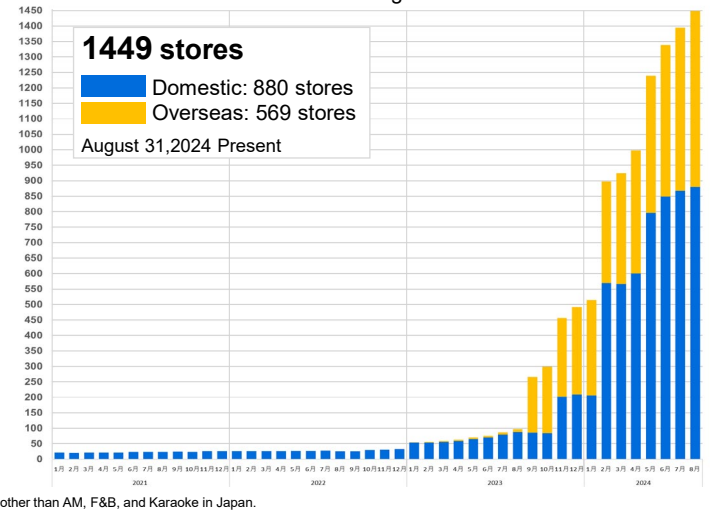
1. Number of stores and offices

Number of stores



Number of stores

※Number of mini-locations *Non-staffed game areas



2. Two new stores opened in front of GiGO station location

On August 1, "GiGO Seibu Higashi-Totsuka SC Annex" opened on the seventh floor of the Annex Building of Seibu Higashi-Totsuka S.C., a shopping center connected to the east exit of Higashi-Totsuka Station by a pedestrian walkway. The store is easily accessible from the adjacent tower condominiums and is closely connected to the community, and on August 8, "GiGO Sannomiya South Exit" opened in a convenient location right next to the exit of JR Sannomiya Station and Hankyu Kobe Sannomiya Station, the largest terminal station in Kobe. It is also located at the entrance to Sannomiya Center Gai, a busy shopping street bustling with local customers and tourists, and is bustling every day with a wide range of customers.



GiGO Seibu Higashi-Totsuka SC Annex



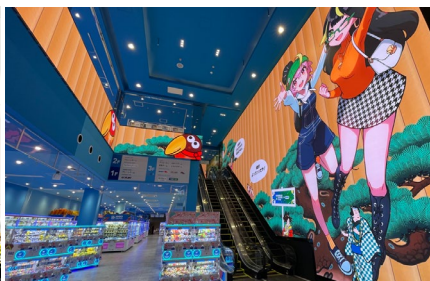
GiGO Sannomiya South Exit

3. GiGO's flagship store opens in Dotonbori, Osaka

The "GiGO Osaka Dotonbori Honten" had its grand opening on August 30 near Ebisu Bridge in the Dotonbori shopping district, the center of Osaka tourism. It is the second flagship store after the "GiGO Sohonten" in Ikebukuro, Tokyo, and boasts one of GiGO's largest floor space of approximately 2,880 m² on three floors above ground, with a 10-meter-high large signage system installed in the atrium on the first floor. The store answers the needs of various customers with a wide range of configurations, including approximately 300 crane games, sensory experience games, and print sticker machines. In addition, there is an extensive merchandise sales corner, including "fanfancy+ with GiGO," the first store in the Kansai region to open a guess store, and "KOTOBUKIYA with GiGO," a store in collaboration with Kotobukiya Co. The "GiGO's Taiyaki" and "Lemonade by Lemonoca," a lemonade specialty store, will also be open. The new facility is an entertainment facility where visitors can enjoy not only games, but also shopping and a lemonade.



GiGO Osaka Dotonbori Honten



GiGO VISION Dotonbori



3F:LEMONADE by Lemonoca



2F:fanfancy+ with GiGO

4. LEMONADE by Lemonica Opens in Toyama

LEMONADE by Lemonica "AEON MALL Takaoka" opened on August 8. As the only store in Toyama Prefecture, expectations are high and many customers have visited the store. GiGO Takaoka" is also located in the same shopping mall, and the GENDA Group stores have been active in sales promotion activities and jointly holding events to send customers to each other's stores.



LEMONADE by Lemonica "AEON MALL Takaoka"