

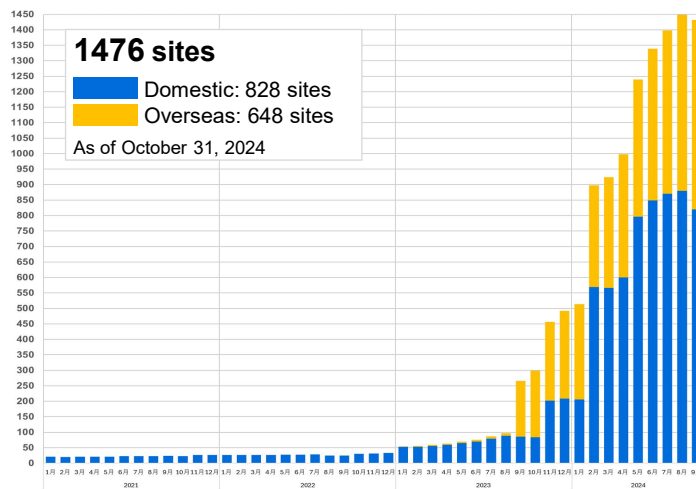
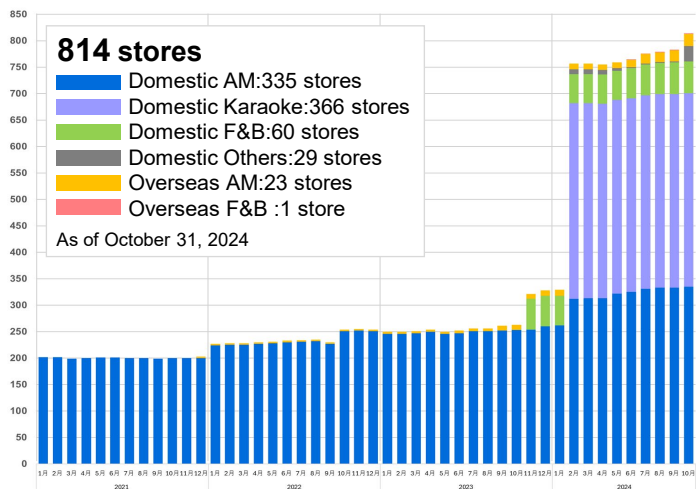
# GENDA Store Expansion Progress Report

※Period covered: October 1, 2024 – October 31, 2024

## 1. Number of stores and sites

Number of stores

Number of sites of mini-location \*Non-staffed game areas



※ Domestic F&B is the total number of "Lemonade by Lemonica" and "Hill Valley." ※ Domestic Others are stores other than AM, F&B and Karaoke in Japan.

## 2. New GiGO stores opened one after another in good locations near train stations.

In October, we opened four new stores near train stations in urban areas, including the one directly connected to the station. On the 8<sup>th</sup>, "GiGO Sannomiya Kitaguchi" opened in the "Sankita Shopping Arcade" on the north side of the station, just a one-minute walk from Hankyu Kobe Sannomiya Station, where you can find many restaurants. As well as crane games, there is a wide variety of video games, virtual games and print sticker machines, and together with "GiGO Sannomiya Minamiguchi" branch, which opened in August and specializes in crane games, we offer customers in the Kobe Sannomiya Station area the chance to try out a variety of game. On the 9<sup>th</sup>, "GiGO Narimasu" opened in the center of the "Narimasu Skip Village Shopping Arcade," which is accessible from two stations and three train lines. It has two floors (1<sup>st</sup> floor and B1) and meets the various needs of our customers by covering virtual game machines, print sticker machines and capsule toy vending machines around crane game machines in the cheerful atmosphere of the store, which is very eye-catching even in this historic shopping arcade. On the 11<sup>th</sup>, "GiGO Tonarie CREO Tsukuba" opened in "CREO," the largest mall in "Tonarie Tsukuba Square," which is a large-scale commercial facility made up of three malls directly connected to Tsukuba Station on the Tsukuba Express Line. The store is located on the third floor of the mall which brings together popular tenants such as supermarkets, electrical appliance stores and home goods stores, making it a convenient place to stop by on your way to work or school or for your daily shopping. On the 23<sup>rd</sup>, "GiGO Yokohama Nishiguchi" opened in a popular area just a one-minute walk from Minami-Nishi exit of Yokohama Station, where a pedestrian precinct is also held. The compact store, filled with a GiGO's selection of prizes, is a fun place just to browse around.



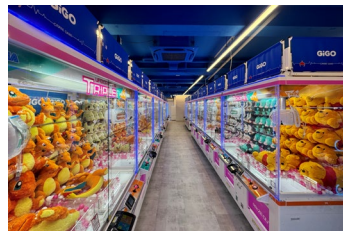
GiGO Sannomiya Kitaguchi



GiGO Narimasu



GiGO Tonarie CREO Tsukuba



GiGO Yokohama Nishiguchi

## 3. GENDA opened an amusement arcade in North America.

On the 31<sup>st</sup>, GENDA opened an amusement arcade in Cupertino, California. It is located in a mall which is adjacent to residential areas and has a lot of popular tenants from Japan and Asia. Our arcade has been attracting considerable attention as an entertainment arcade coming from Japan in the mall centered on restaurants and daily goods stores. It has not only crane games but also large-size prize machines and was full of customers who were looking for Japanese anime and Japanese-style kawaii prizes on the opening day.



Kiddleton Cupertino CA

## 4. A next-generation theme park operated by GiGO Taiwan opened.

On the 23<sup>rd</sup>, the next-generation theme park "Little Planet Mitsui Outlet Park Taiwan Linkou," operated by GiGO Taiwan, opened on the second floor of the shopping center "Mitsui Outlet Park Taiwan Linkou II" in Linkou, New Taipei City, in the outskirts of Taipei, Taiwan. Little Planet is a new type of theme park for families that makes full use of the latest digital technology to stimulate children's impulse for exploration and creativity. We offer children new experiences through attractions that combine traditional games like playing with sand and coloring with technologies like AR (augmented reality) and projection mapping etc.



Little Planet Mitsui Outlet Park Taiwan Linkou